

**CT DEEP 2017
FISHING REPORT NUMBER 2
4/21/2017**



Rainbow Trout (*Oncorhynchus mykiss*)



YOU CAN FIND US DIRECTLY ON FACEBOOK. This page features a variety of information on fishing, hunting, and wildlife watching in Connecticut. The address is www.facebook.com/CTFishandWildlife.

SHARE THE EXPERIENCE
Take someone fishing

INLAND REPORT

DEEP's in-season stockings are now underway with over 220,000 additional trout scheduled to be stocked before the end of May.

TROUT- RIVERS & STREAMS - Conditions should be good for trout fishing in most areas this weekend. Flows are now back to typical spring levels or below (*see stream flow graphic on page 4*) although some rain prior to the weekend may increase flows a bit, generally comfortable weather (but with a few showers) is forecast, and there are plenty of stocked trout waiting for anglers. As water temperatures warm, fishing should improve.

Reports from anglers are streaming in with action picking up in many of the waters that were previously difficult to fish. Some bait & lure favorites seem to be mealworms, Pink Powerbait, various small Mepps spinners and the ole reliable-Phoebe goldfish. The fair to good reports from last week included the Norwalk River, Hammonasset River, Salmon River, and Natchaug River. Reports also indicated that fishing on the Saugatuck River and West River has not started to pick up yet. Also, flows on the high side slowed fishing on the Farmington and Housatonic rivers.

Farmington River - Fishing was mostly fair last week with flows on the high side. Conditions should be much better for the upcoming weekend with comfortable weather forecast and clear, moderate flows, currently 265 CFS at Riverton plus an additional 138 CFS from the Still River. Water temperatures range from the low 40's to around 50 °F.

Typical mid-April hatches/patterns include Blue Wing Olive, Hendrickson (will appear mid to late April when it warms up a bit), Winter/Summer Caddis, Pheasant Tails, Hares Ears, Stonefly nymphs, Midge and Blue Quill. Nymphs (#18-22) are always a good go-to fly, try Bead Head, Midge Pupa, Brassie, Zebra Midge or Copper John patterns. Streamers are also a good option (White Zonkers & Buggers (#4-12) as well as Muddlers, Micky Finn, Grey or Black Ghost).

Anglers- ALL

of your dollars invested in a fishing license go to support fish and wildlife!

State law (CGS 26-15a) requires 100% of the fees collected from the sale of sporting licenses to be allocated from the General Fund to the Department of Energy and Environmental Protection, Bureau of Natural Resources.

Your investment makes a difference. Thank You.

Housatonic River - Conditions for the weekend should be fair to good. Comfortable weather is forecast and flows have dropped to more fishable levels. Currently flows are “clearing”, and moderately high (currently 1,280 CFS at Falls Village and 2,040 CFS at Gaylordsville) but lower than typical flows for mid-April. Morning water temperatures are currently in the mid 50’s °F.

Hatches/patterns. Typical patterns for mid-April include March Brown (#10-12), Pheasant Tail (#12-18), Stoneflies (#6-10), Pheasant Tails (#14-20), and Black Stoneflies (#18-22). Look for Hendriksons soon. Nymphing (try Bead Head, Midge Pupa or Copper Johns) and streamers (such as White/Yellow Zonkers or Woolly Buggers) are good options for fishing the current flows.

Rivers and streams stocking update (Note that all stocking schedules are subject to change):

In **eastern Connecticut**; the Middle River, Roaring Brook, the Willimantic River (sections of the river above and below the TMA), Salmon River (including the TMA), Coginchaug River, Bigelow Brook, Mount Hope River, Fenton River, Hop River, Skungamaug River, Moosup River (including the TMA), Hammonasset River (including the TMA), Roaring Brook (Glastonbury), Shetucket River, Yantic River (including the TMA), Natchaug River, Indiantown Brook, Farm River (both upper and lower), Branford River and Beaver Brook were stocked.

In **western Connecticut**; the Weekeepeemee River, Nonewaug River, Hop Brook, Little River, Eight Mile Brook, Shepaug River, East Aspetuck River, Pond Brook, the lower Pootatuck River, Pequonnock River (Trumbull Basin), lower Saugatuck River, the Housatonic River TMA (yearling trout), the upper Farmington River TMA (the West Branch Farmington River from the Goodwin Dam down to the upper boundary of the year-round catch-and-release area), Leadmine Brook, the lower Farmington River TMA (from the lower Collinsville dam to the Route 177 bridge), the Farmington River (from the route 177 bridge to Route 4), and the Farmington River TMA (from the lower end of the year-round catch-and-release area at Route 219 to the lower Collinsville dam) were stocked.

TROUT-LAKES & PONDS - The lakes are also starting to produce more fish, with reports of good catches from Beach Pond, Saugatuck Reservoir, Highland Lake, West Hill Pond (including a 20.5 inch Brown Trout), Black Pond, and Long Pond. Fair reports are from Crystal Lake, East Twin Lake, Quonnipaug Lake and Candlewood Lake (spotty action) and Squantz Pond has been slow.

Lakes and ponds stocking update (Note that all stocking schedules are subject to change):

In **eastern Connecticut**; Bicentennial Pond, Quonnipaug Lake, Walkers Reservoir, Wauregan Reservoir (Quinebaug Lake), Angus Park Pond, Gay City Park Pond, Mashapaug Lake, Bigelow Pond, Amos Lake, Green Falls Reservoir, Hewitt Fly Pond, Lake Saltonstall, Branford supply Ponds, Beaver Brook Park Pond, Gardner Lake, and Cedar Lake were stocked.

In **western Connecticut**; Huntington Pond (Starret Pond) was stocked.

TROUT PARKS – Fishing ranged from fair to very good at the Trout Parks. This week the Southford Falls, Wolfe Park (Great Hollow Pond), Day Pond, Chatfield Hollow (both Chatfield Hollow Brook and Schreeder Pond), Mohegan Park Pond, and Natchaug River Trout Parks were stocked.



30 inch Brown Trout caught by Craig Fetridge at Crystal Lake on Opening Day evening.

COMMUNITY FISHING WATERS- Birge Pond, Mirror Lake (Hubbard Park Pond), and Center Springs Park Pond were stocked.

LARGEMOUTH BASS fishing has picked up some over the last week in a number of areas, with bass still finding their spring spots and temperatures warming only slowly. Fair to good reports from Candlewood Lake (some 4-lb bass are being found), lower Bolton Lake and Congomond Lake.

Tournament angler reports are from Pachaug Pond (good spring action with everyone catching fish, 4.67 lunker, fish averaged over 2 lbs apiece), Gardner Lake (fair to good for most, including 5 limits out of 21 anglers, with a 3.44 lb lunker), Candlewood Lake (a few in the bags), and Lake Lillinonah (not many in the bags, but catches included a 6.25 lb lunker).

SMALLMOUTH BASS. Some smallmouth are being found, with reports from Candlewood Lake (picking up nicely, look for them along drop-offs, reports of a 6.9 smallie being caught), Highland Lake (slow), Saugatuck reservoir (fair to good) and Lake Lillinonah (good). **Tournament angler** reports are from Candlewood Lake (fair to good action, 4.52 lb lunker for one club, winning bag of 20 lbs for another), Gardner Lake (none to be found), and Lake Lillinonah (good to very good smallie fishing for many, with a 5.36 lb lunker).

WALLEYE Catches reported from Beach Pond and Saugatuck Reservoir.

CONNECTICUT RIVER

The river remains cool and is moderately turbid, but flows have dropped and are now at typical mid-April levels. Some **AMERICAN SHAD** are in the lower river, and there are a few reports of fish (and catches) above Hartford, mostly near the mouth of the Farmington River (shad should pick up as water temperatures increase). Shad darts and willow leafs generally work well. **STRIPED BASS** are being found in the lower river, mostly schoolie size fish and the action is spotty. **LARGEMOUTH BASS** are beginning to bite in the lower coves (Hamburg Cove, Salmon River). No **WHITE PERCH** yet.



ZEBRA MUSSELS REMINDER

Zebra mussels are now found in a number of locations scattered throughout the Housatonic River and its impoundments including Lake Lillinonah (since 2010), Lake Zoar (since 2010) and Lake Housatonic (since 2011).

Prior to their discovery in Lakes Lillinonah and Zoar in 2010, zebra mussels had been found (1998) in CT only in East Twin Lake and West Twin Lake (Salisbury). Anglers fishing in any of these waters and western Connecticut in general **should use extra care to avoid transporting water, aquatic vegetation, and possibly zebra mussels to new locations.** Information

For more information including precautions that should be taken to prevent the spread of zebra mussels to additional waters, visit www.ct.gov/deep/invasivespecies or the Aquatic Invasive species section of the 2017 CT angler's Guide(www.ct.gov/deep/anglersguide).

NEW INTERACTIVE TROUT STOCKING MAP NOW AVAILABLE.

Anglers can find more information on trout stocking online. A list of the waters that were dropped from this year's stocking schedule is on our webpage at: www.ct.gov/deep/fishing, along with an interactive trout stocking map (www.ct.gov/deep/troutstockingmaps) that anglers should find very useful for planning their next outing. The new application (mobile friendly) provides the number of days since the last stocking at each of our stocked waters enabling anglers to search for their favorite waterbody or by that have been recently stocked.

NOTES & NOTICES:

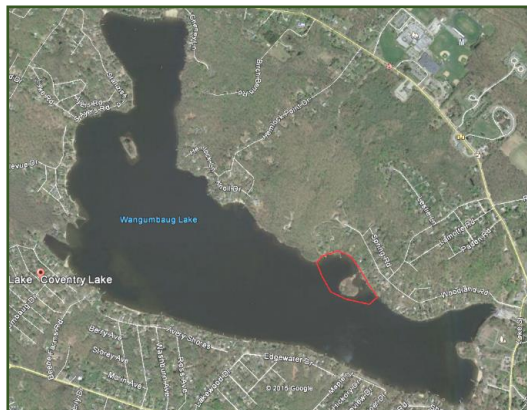
DRAWDOWN UPDATES – BASHAN LAKE, and **DOOLEY POND** have refilled and the state boat launches on these two lakes are open to use. **HANOVER POND** has also refilled.

BRANFORD RIVER (boat launch). The Branford River state boat launch continues to be closed for renovations. Alternative nearby launch sites include the Guilford Town boat launch and the East River State boat launch, both in Guilford.

CONNECTICUT RIVER (invasive species alert). Hydrilla was recently found in the main stem Connecticut River in Glastonbury (near Glastonbury's Riverfront Park & Boathouse). See the Coventry Lake entry below for what river users should do to prevent spread of this invasive plant to other waterbodies.

COVENTRY LAKE (invasive species alert). Hydrilla, a very highly invasive aquatic plant, has been found growing in Coventry Lake. All lake users should take extra care to check and clean their boats (including canoes, kayaks and rowing sculls), trailers, and fishing equipment before leaving the boat launch, or leaving the lakeshore.

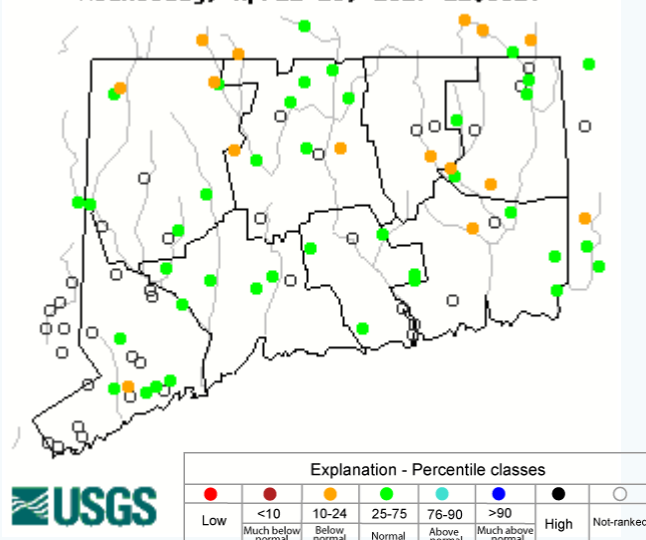
Coventry Lake (Wangumbaug Lake) boaters should avoid the area outlined in red to avoid fragmenting and spreading hydrilla. This is only area in the lake where hydrilla has been found.



GLASGO POND (drawdown). Glasgo Pond is currently drawn down approximately 4 feet to facilitate dam modifications.

Stream flow conditions

Wednesday, April 19, 2017 21:30ET



Data in the state graphic to the left are generated by the United States Geologic Survey (USGS) and are available on line at: <http://waterdata.usgs.gov/ct/nwis/rt>. A percentile is a value on a scale of one hundred that indicates the percent of data in the data set equal to or below it. For example streamflow greater than the 75th percentile means only ¼ of the streamflow values were above the value and thus would be considered "above normal". Stream flow between the 25th and 50th are considered to be "normal flows" and those 25th or less are considered to be "below normal".

MARINE FISHING REPORT

Bonus Striped Bass Fishing Program

The Department of Energy and Environmental Protection is again conducting the **Bonus Striped Bass Fishing Program, which will run from May 1 through December 31 in 2017**. See the attached pdf document for program details.

Tags will be available beginning Thursday, April 20th at DEEP Offices and Facilities listed below. There is a limit of TWO TAGS annually per Connecticut fishing license holder. However, for convenience, one person may pick up at most FOUR tags by presenting valid Connecticut fishing licenses for two anglers. Children are also eligible to receive a tags by signing up for a free [Youth Fishing Passport](#). **Tags will be available on a first come first serve basis for as long as supplies last.**

<i>DEEP Offices/Facilities</i>	<i>Address</i>	<i>Town</i>	<i>State</i>	<i>Zip</i>
Marine Headquarters , M-F 8am-4pm, 860-434-6043	333 Ferry Road	Old Lyme	CT	06371
Eastern District , M-F 8:30am-4pm, 860-295-9523	209 Hebron Ave	Marlborough	CT	06447
Western District , M-F 8:30am-4pm, 860-485-0226	230 Plymouth Rd	Harwinton	CT	06791
Franklin WMA , 860-642-7239 M-F 8:30am-4:30pm	391 Route 32	Franklin	CT	06254
Sessions Woods WMA , M-F 8:30am-4pm, 860-675-8130	341 Milford Street (Rte 69)	Burlington	CT	06013
CTDEEP Main Office M-F 9am-4pm, 860-424-3105	79 Elm Street	Hartford	CT	06106

The full Marine Fishing Report will resume next week.

The Connecticut Department of Energy and Environmental Protection is an Affirmative Action/Equal Opportunity Employer that is committed to complying with the requirements of the Americans with Disabilities Act. Please contact us at (860) 418-5910 or deep.accommodations@ct.gov if you have a disability and need a communication aid or service; have limited proficiency in English and may need information in another language; or if you wish to file an ADA or Title VI discrimination complaint.

DEEP WEEKLY Fishing Report



**Connecticut Department of
ENERGY & ENVIRONMENTAL PROTECTION**

79 Elm Street, Hartford, CT 06106

www.ct.gov/deep